

**Premium cryogenic transportable and storage cylinders ideal for liquid nitrogen, oxygen, argon, carbon dioxide and nitrous oxide.**

### USER FRIENDLY CYLINDERS

#### Easy to Use

- Ideal for transportable or stationary gas supply
- Automatic pressure building and gas economizer systems
- All valves and instruments within easy reach and visibility
- Stable low center of gravity

#### Superior Performance

- Rugged, maneuverable and fast filling
- Gas and/or liquid withdrawal
- Continuous flow rates up to 10,5 Nm<sup>3</sup>/h

#### Cost Effective

- Super-insulation provides long holding time and low Nominal Evaporation Rate
- All stainless steel vessels and patented inner support system for durability and long life
- Heavy-duty footring and large diameter handling ring with four supports



**5**-year  
vacuum  
warranty



#### Liquid Cylinder Control Manifold (LCCM) Regulator

Dual function regulator controls pressure building and gas economizing

Eliminates copper piping and fittings

Easy to set and adjust pressure-control knob

Type		180 / 24	230 / 22 SB*
<b>Capacity</b>			
Liquid (gross)	(liters)	196	240
Liquid (net)	(liters)	186	228
Gas (N <sub>2</sub> )**	(Nm <sup>3</sup> )	98	120
Gas (O <sub>2</sub> )**	(Nm <sup>3</sup> )	126	154
Gas (Ar)**	(Nm <sup>3</sup> )	123	151
Gas (CO <sub>2</sub> )**	(Nm <sup>3</sup> )	104	128
Gas (N <sub>2</sub> O)**	(Nm <sup>3</sup> )	96	118
<b>Performance</b>			
NER*** (N <sub>2</sub> )	(% per day)	1,9	1,8
NER (O <sub>2</sub> - AR)	(% per day)	1,3	1,2
NER (CO <sub>2</sub> - N <sub>2</sub> O)	(% per day)	0,5	0,5
Gas Flow (N <sub>2</sub> , O <sub>2</sub> )	(Nm <sup>3</sup> /hr)	9,2	10,5
Gas Flow (CO <sub>2</sub> or N <sub>2</sub> O)	(Nm <sup>3</sup> /hr)	2,9	2,9
Relief Valve Setting	(bar)	24	22
Code		TPED (EN1251)	TPED (EN1251)
<b>Dimensions</b>			
Tank Diameter	(mm)	508	660
Base Type		footring	mini-pallet square base
Base Size	(mm)	508	715x715
Height	(mm)	1622	1389
Empty Weight	(kg)	135	189
Maximum Full Weight****			
	N <sub>2</sub> (kg)	285	373
	O <sub>2</sub> (kg)	347	449
	Ar (kg)	394	507
	CO <sub>2</sub> (kg)	354	458
	N <sub>2</sub> O (kg)	331	429

\* Option: Casters and towing handle (adds approximately 130 mm to overall height and 10 kg to overall weight)

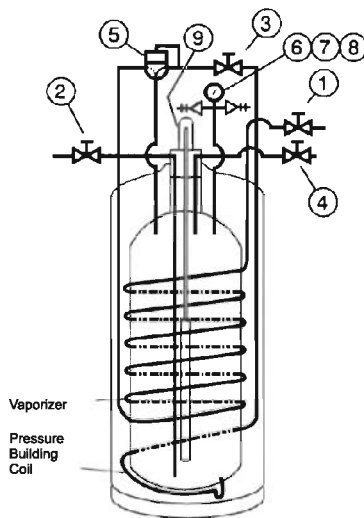
\*\* At 10 bar pressure

\*\*\* NER: Nominal Evaporation Rate

\*\*\*\* Tank plus product at saturated pressure 0 bar for O<sub>2</sub>, N<sub>2</sub>, Ar and triple point for CO<sub>2</sub> and N<sub>2</sub>O



The Roto-Cal™ gauge features an easy-to-read dial liquid level indicator with swivel head design.



#### Item Plumbing Controls and Function

- 1. Gas Use Valve** – Used for gas withdrawal.
- 2. Fill / Liquid Valve** – Used for filling or liquid withdrawal.
- 3. Pressure Control Valve** – Used to turn on / off the pressure control regulator function.
- 4. Vent Valve** – Used to vent pressure.
- 5. Combination Pressure Control Regulator** – Used to automatically control operating pressure.
- 6. Pressure Gauge** – Indicates internal cylinder pressure.
- 7. & 8. Dual Pressure Relief Valves** – Used to limit pressure in the liquid cylinder.
- 9. Liquid Level Gauge** – Used to approximate the liquid contents of the liquid cylinder.

Detaylı bilgi için; 0312 344 26 05  
satis@kayralabtek.com