

TD5 Table Top Low Speed Centrifuge



Features:

1. Microprocessor control, digital display, touch panel, parameters in running can be edited and change to display other running parameter and RCF.
2. Brushless frequency motor with simpler construction, more reliable performance, longer life and quietly running.
3. Automatic lid lock, super speed, over temperature protection and imbalance protection. The centrifuge body is made of high quality steel, safe and reliable.
4. Adapters are available by experiment requirements.
5. 3 tiers protection steel cover, safe and reliable.
6. TUV CE EMC certificate.

TD5 Technical Parameter:

Max. Speed	5000rpm
Max. RCF	4730×g
Max. Capacity	4×250ml
Time Range	0~99min
RPM/RCF Convert	Yes
Noise (dB)	≤ 58
Temperature	Normal
Acc/Dec	10 Kinds
Speed Accuracy	±20r/min
Temperature Accuracy	/
Voltage(V/Hz)	AC 220V/110V 50HZ/60HZ
Size (W x D x Hmm)	570×400×320mm
Net Weight(Kg)	35KG
Certificates	CE,ISO & Calibration report are available

Matched Rotors for TD5

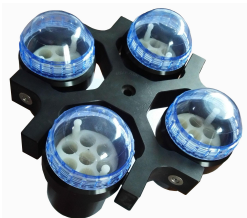
Order No	Rotor	Max Speed(r/min)	Volume(ml)	Max RCF(×g)
D5-1	Swing rotor(round cup)	4000	4×250ml	2880
D5-2	Swing buckets	4000	4×16×7ml	2860
D5-3		4000	4×16×5ml	2470
D5-4		4000	4×13×10ml	2830
D5-5	Swing rotor	5000	4×1×50ml	4730
D5-6			4×1×100ml	4730
D5-7			4×2×100ml	3020
D5-8			4×2×50ml	3020

D5-9		4000	4×4×15ml	3020
D5-10			4×6×15ml	3020
D5-11			4×4×10/7	2770
D5-12			4×4×5 vacuum tube adapters	2360
D5-13			4×6×10/7	2770
D5-14			4×6×5 vacuum tube adapters	2360
D5-15			4×8×10/7	2770
D5-16			4×8×5 vacuum tube adapters	2360
D5-17			4×12×5 vacuum tube	2480
D5-18			4×12×7 vacuum tube	2760
D5-19			4×10×10 vacuum tube	2880
D5-20	Microplate rotor	4000	2×3×96 well	2310
D5-21	Fixed rotor	5000	6×15ml	2540
D5-22	Fixed rotor	5000	12×15ml	3080
D5-23		5000	24×15ml	3500
D5-24		5000	30×15ml	3830
D5-25		5000	4×50ml	2520
D5-26		5000	6×50ml	2850
D5-27		4000	12×50ml	2470
D5-28		5000	4×100ml	2630
D5-29		5000	6×100ml	3130



Adapter for 250 round cup and square cup

Volume	5ml	7ml	10ml	15ml	50ml
Cup					
250ml (Square)	9pcs/cup	9	9	4	1
250ml (Round)	7pcs/cup	7	7	4	1



Rotor with adapter